

Monitoring PrEP uptake through PBS data

Curtis Chan | November 26th 2025

Monitoring HIV pre-exposure prophylaxis (PrEP) uptake in Australia



Issue #13, September 2025

HIV pre-exposure prophylaxis (PrEP) was listed on the Pharmaceutical Benefits Scheme (PBS) on 1 April 2018. The PBS subsidises the cost of PrEP for people eligible for Medicare in Australia. The cost to the patient for 30 pills as of 2024 was \$31.60 for general patients and \$7.70 for concession card holders.

This report uses data from every PBS-subsidised PrEP prescription that was dispensed in Australia between 1 April 2018 and 30 June 2025. The data are de-identified but incorporate unique codes so that data can be presented on the number of unique individuals receiving PrEP, and so that an individual's record of being dispensed PrEP over time can be constructed. Variables include patient details (age, sex, postcode of residence, concession status), information about dispensing (date of dispensing, quantity dispensed), and prescriber details (postcode, specialty).

Data are presented on the total number of people who have ever initiated PBS-subsidised PrEP, as well as the number of people dispensed PrEP within each quarter, and within the past 12 months. These data are disaggregated by age, and by state or territory of patient residence, and presented as population rates.

PBS PrEP Data: from prescription to dispensing



Clinician sees patient
(prescriber-level and patient-level)



Clinician writes a prescription
(prescription-level)



Patient goes to pharmacy with prescription to receive medication
(dispensing-level and pharmacy-level)



Patient-level (deidentified):

- Age
- Sex
- Postcode

Clinician sees
patient

(prescriber-level and
patient-level)

Prescriber-level (deidentified):

- Postcode
- Speciality*
- Number of PrEP patients (caseload)

Prescription-level:

- Date of prescription
- Repeats
- Indication
- Drug formulation



Clinician writes a
prescription
(prescription-level)

Dispensing-level:

- Date they received PrEP
- Number of repeats remaining

Pharmacy-level:

- Postcode

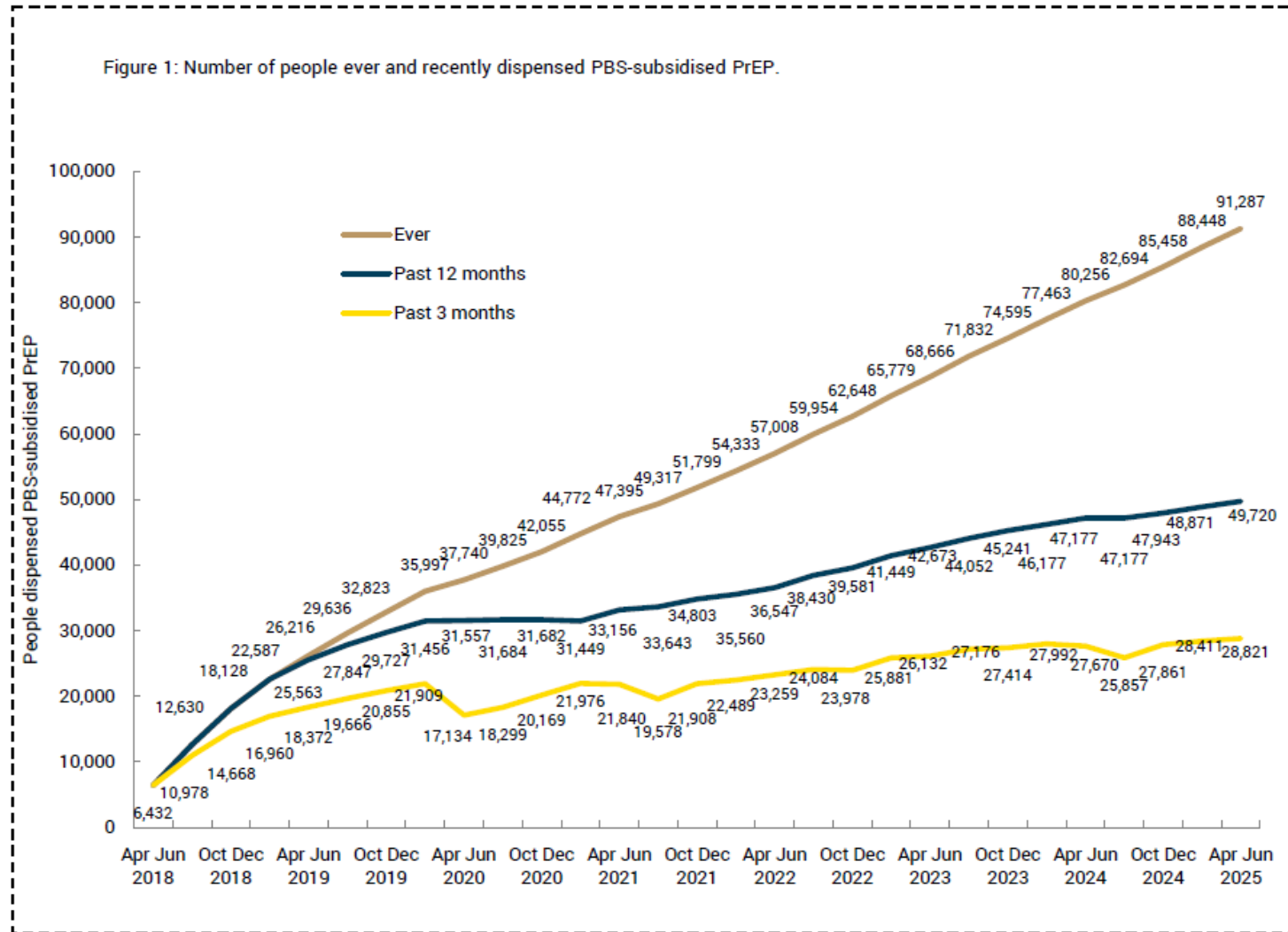


Patient goes to pharmacy with prescription to receive medication
(dispensing-level and pharmacy-level)

PrEP uptake: April 2018-June 2025

Monitoring uptake to end of June 2025 (national)

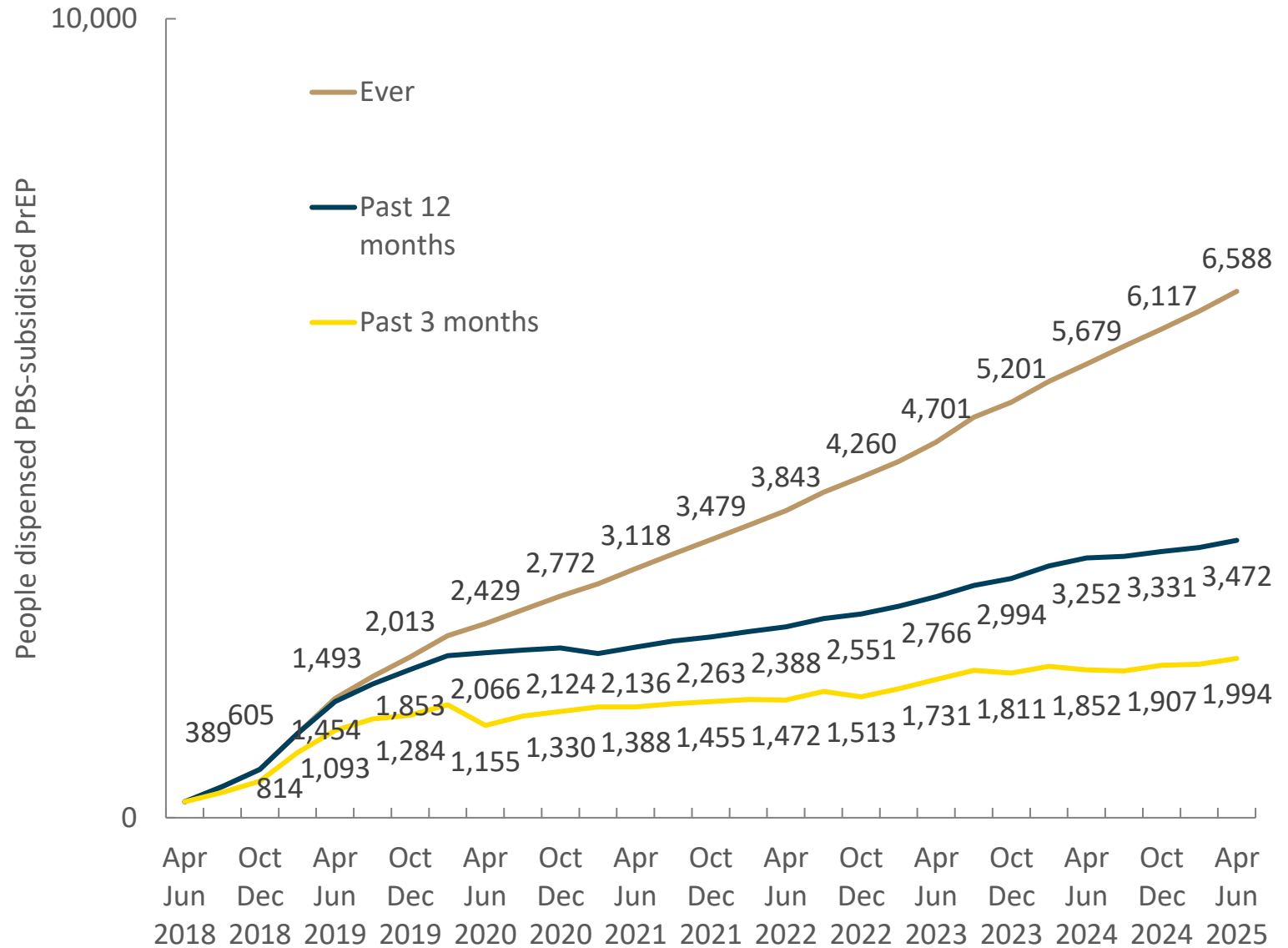
- Ever received PBS PrEP up to 91,287
- Received PrEP in the last twelve months up to 49,720
- Received PrEP in the last three months at 28,821



Monitoring uptake to end of June 2025 (Western Australia)

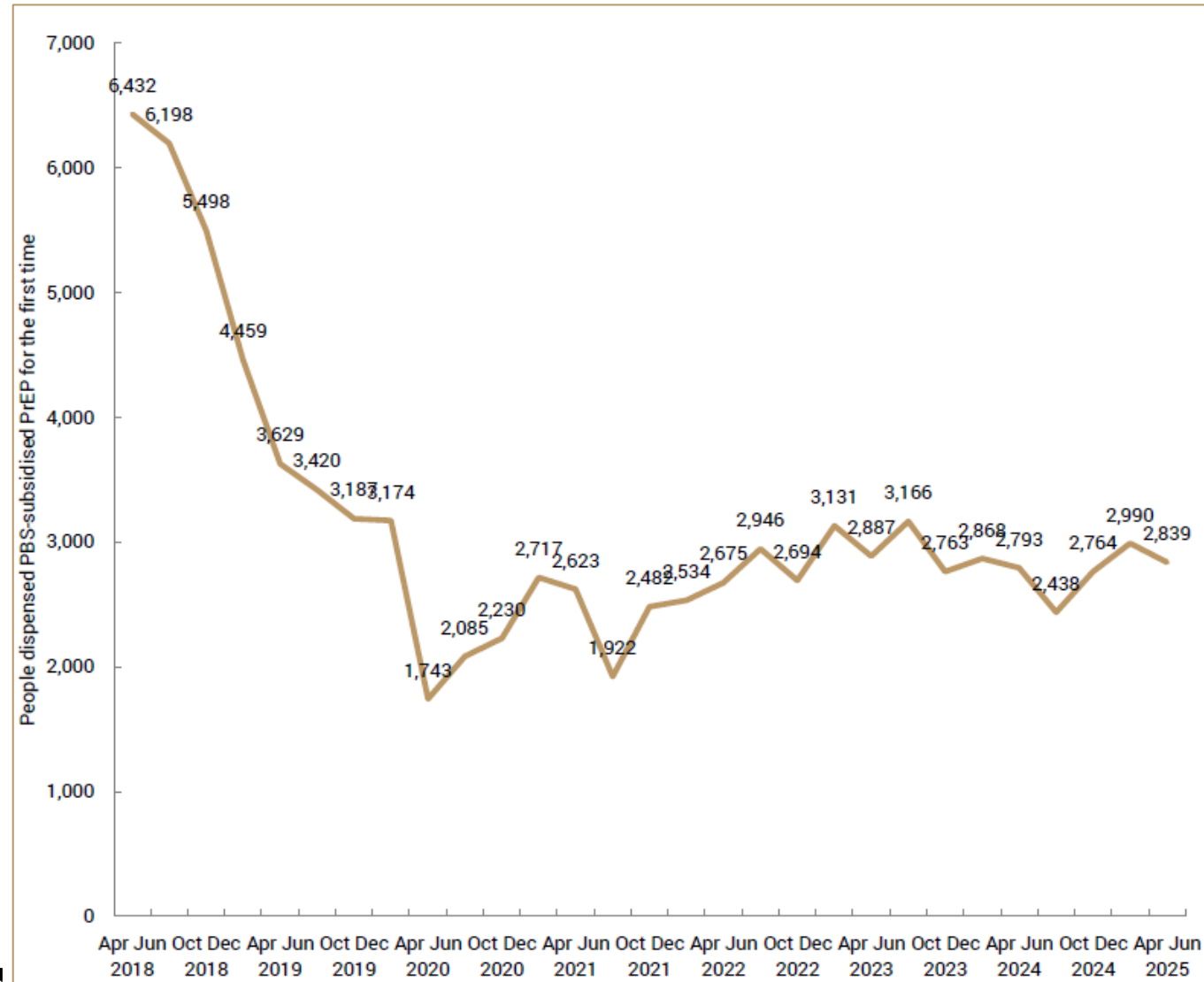
- Ever received PBS PrEP up to **6,588** (not in report but theoretically calculatable)
 - This is an underestimate - will be discussed later
- Received PrEP in the last twelve months up to **3,472**
- Received PrEP in the last three months at **1,994** (not in report)

Figure 1: Number of people dispensed at least one PBS-subsidised PrEP prescription.



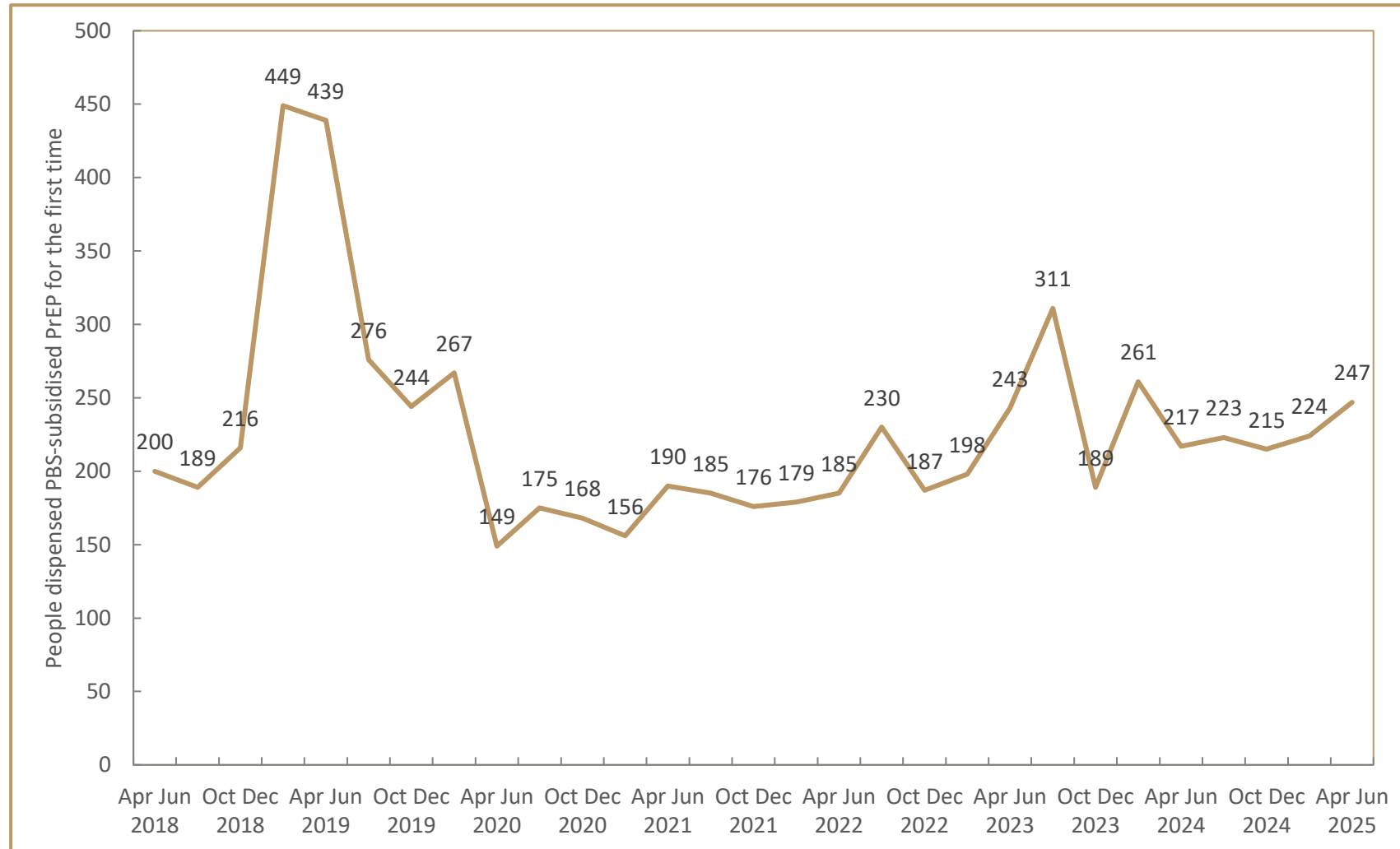
New PrEP initiations

(national)



New PrEP initiations

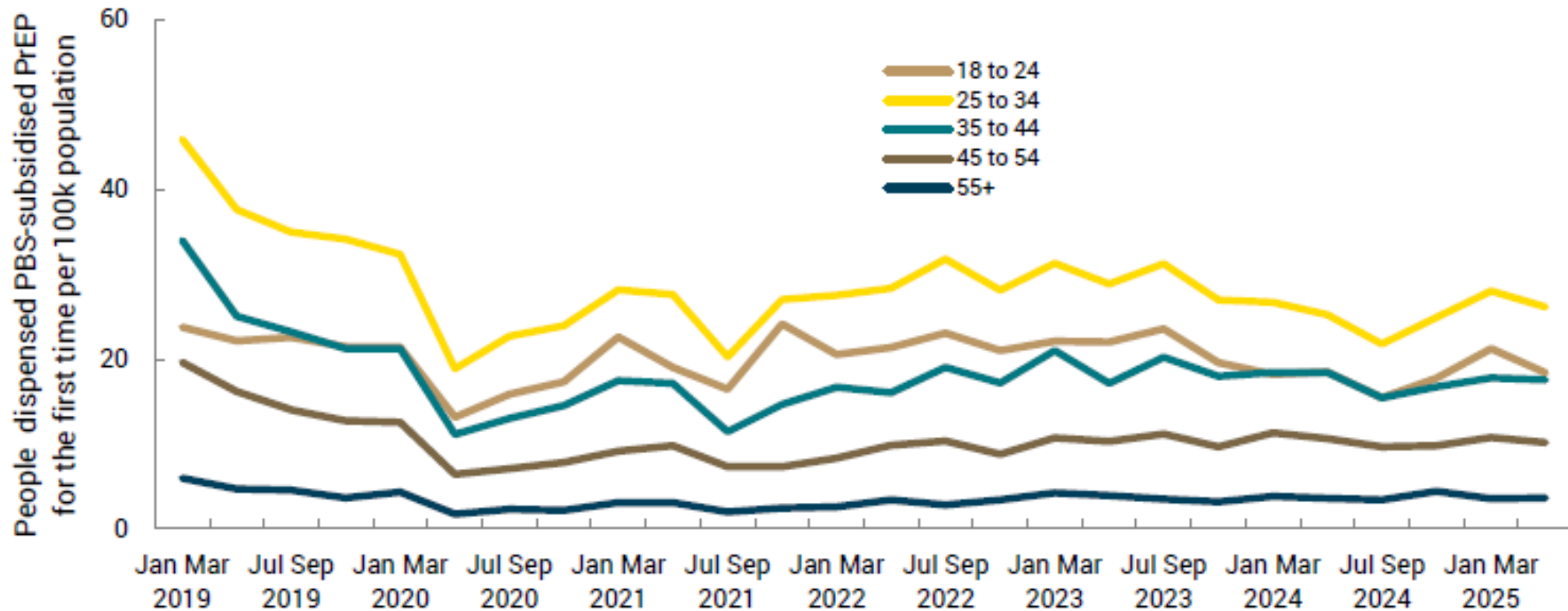
(Western Australia)



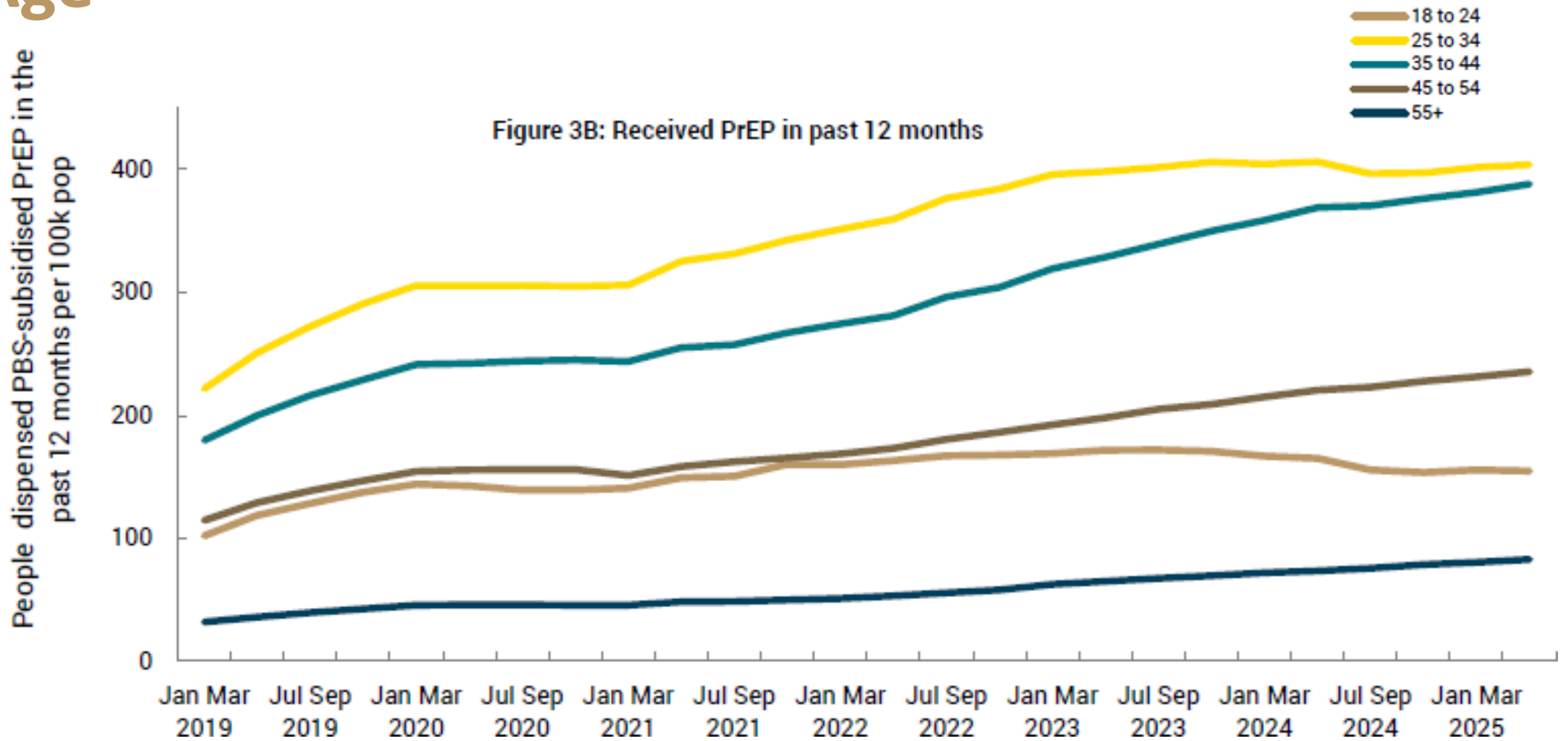
Age

Figure 3: Rate of PrEP dispensing per 100,000 population for the first time (A) and in the past 12 months (B) by age group

Figure 3A: Received PrEP for the first time

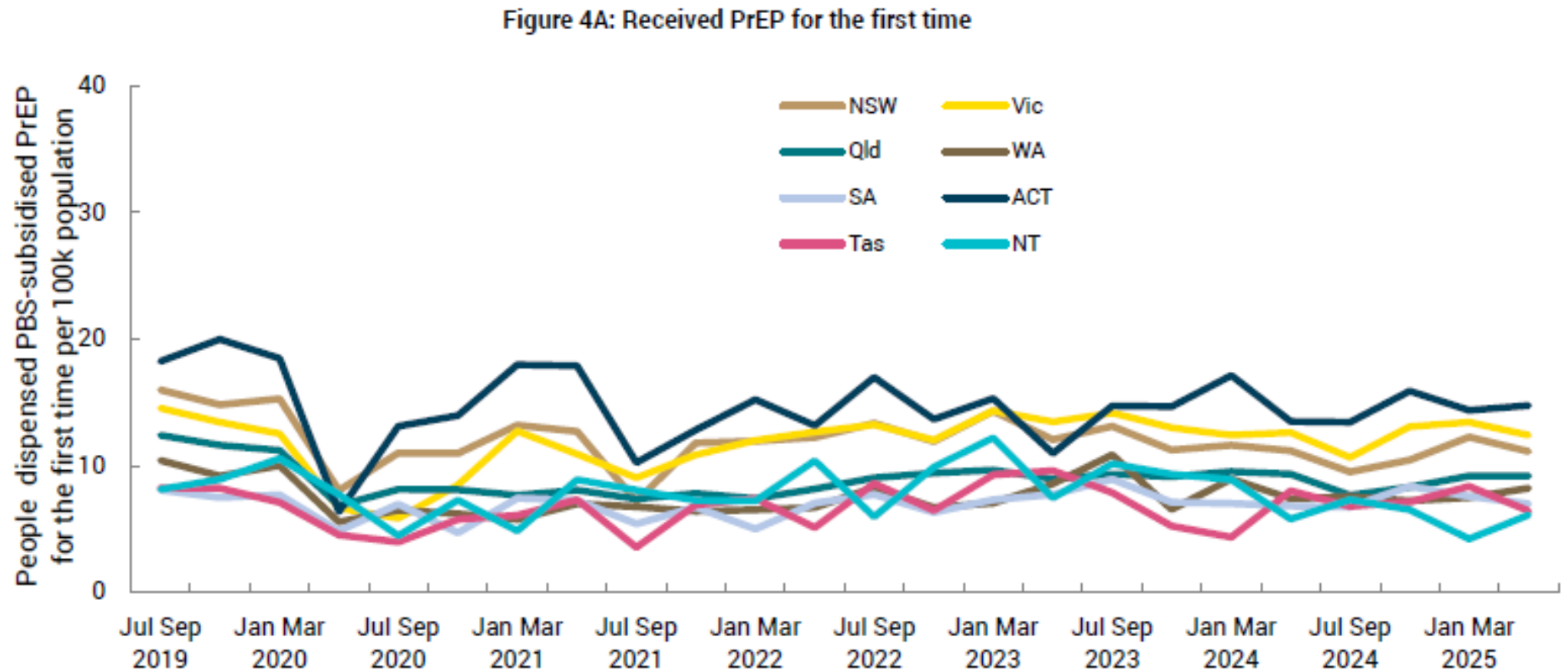


Age



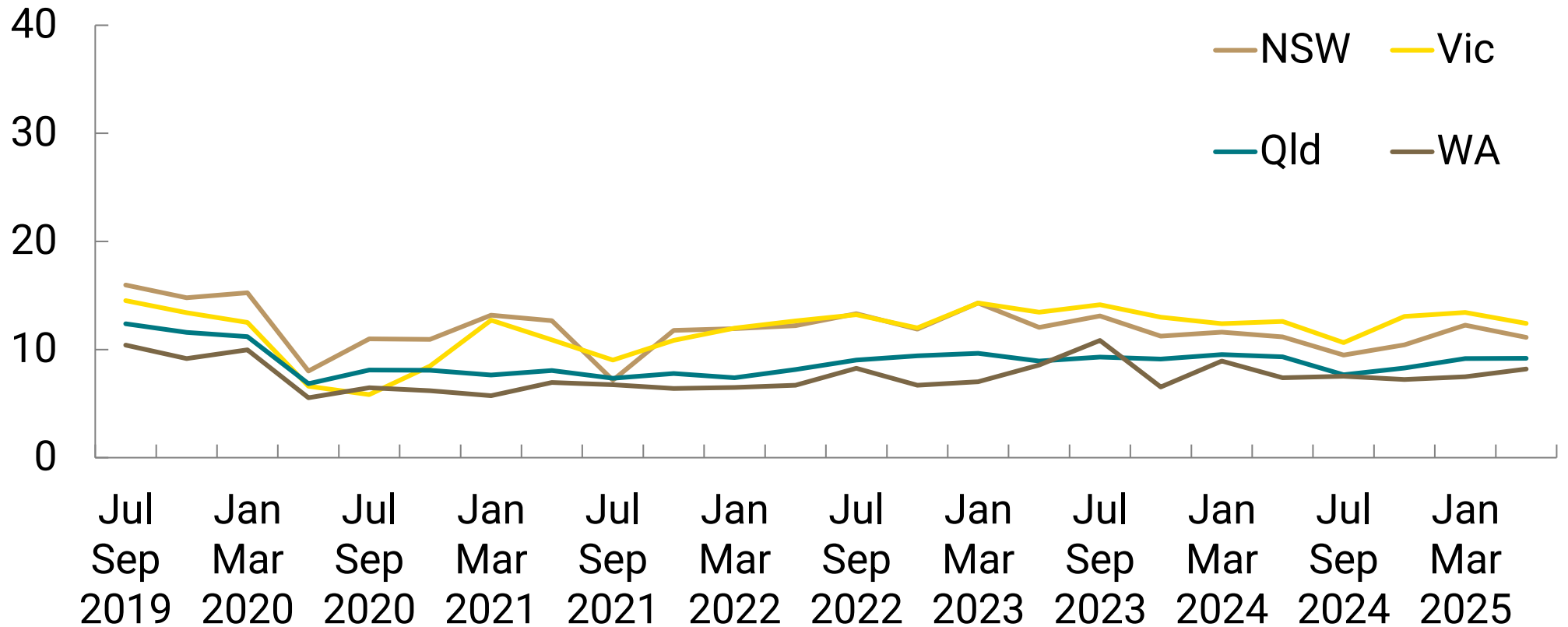
State

Figure 4: Rate of PrEP dispensing per 100,000 population for the first time (A) and in the past 12 months (B) by state or territory

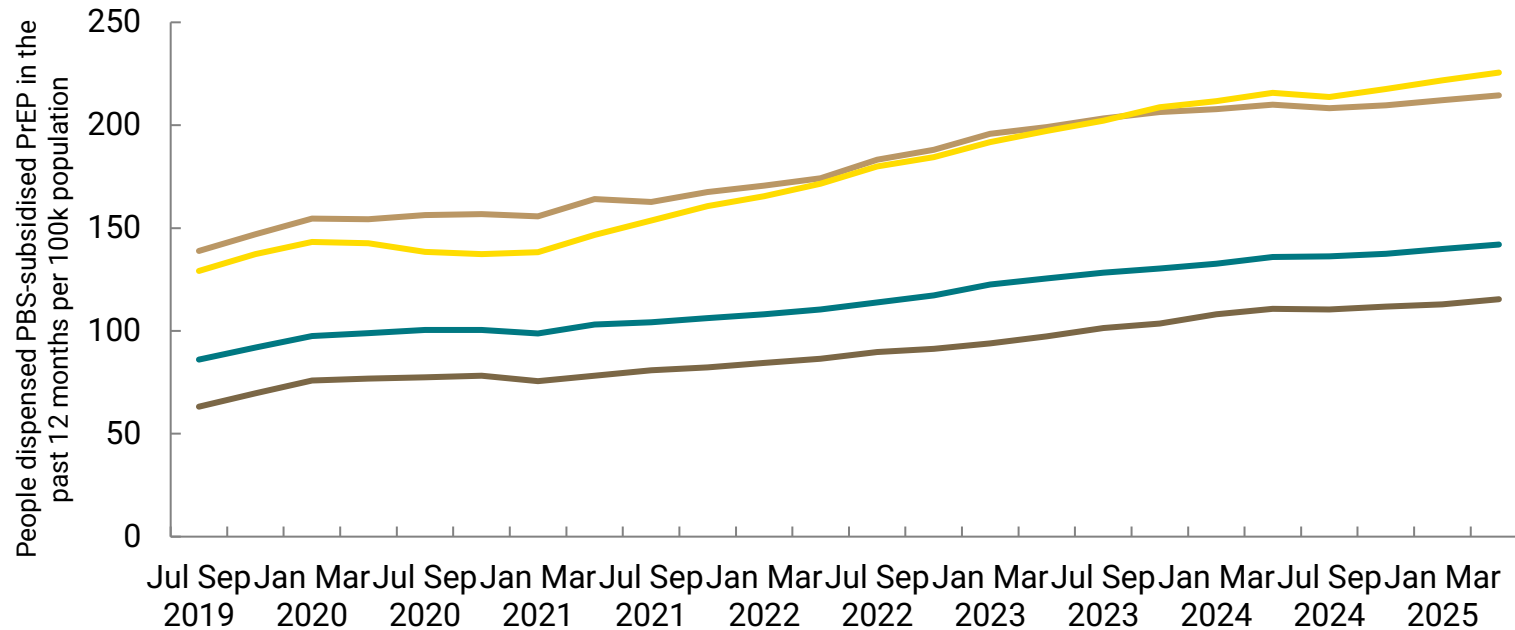
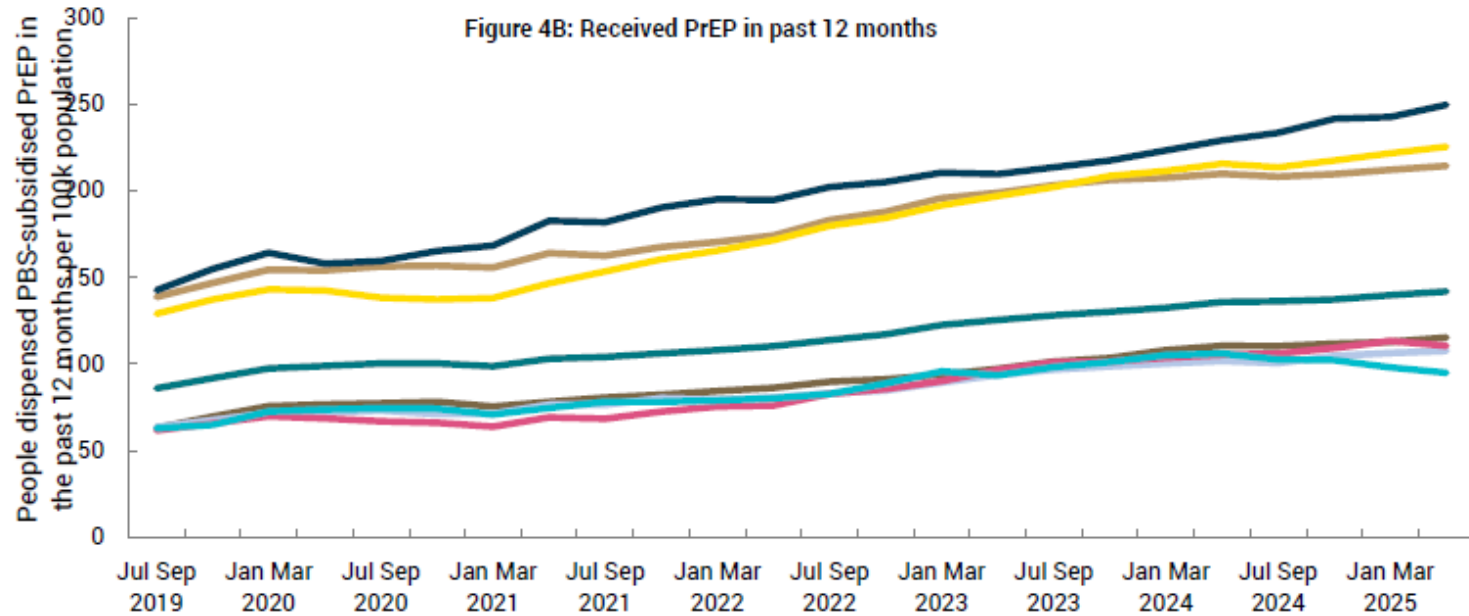


State

People dispensed PBS-subsidised PrEP for the first time per 100k population



State



Acknowledgements

- PBS data is provided by the Department of Health, Disability, and Aging.
- Kirby Institute team: Curtis Chan, Hamish McManus, Skye McGregor, Andrew Grulich, Benjamin Bavinton.